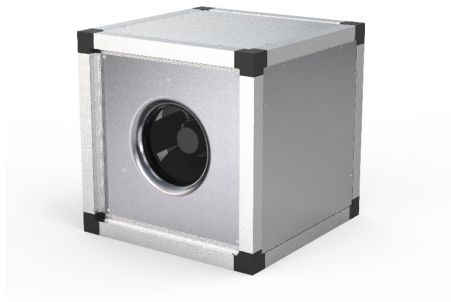


MUB 062 630DV sileo Multibox

Article number: 235408

Variant : 400V 3~ 50Hz - Straight air flow



Description

- Speed-controllable
- Modular system
- Integral thermal contacts
- Low sound level
- Flexible airflow direction due to removable panels
- Installation in any mounting position
- Maintenance-free and reliable

The MUB fan size 630DV have 3D profiled impellers with backward curved blades, manufactured from polyamide. MUB 630DV is equipped with external rotor motors, fully speed controllable. For speed controlling with a frequency converter a type with all pole sine filter is needed!. The motors are D/Y connected for two speed operation. Motor protection is done by thermal contacts, which have to be connected to an external motor protection...

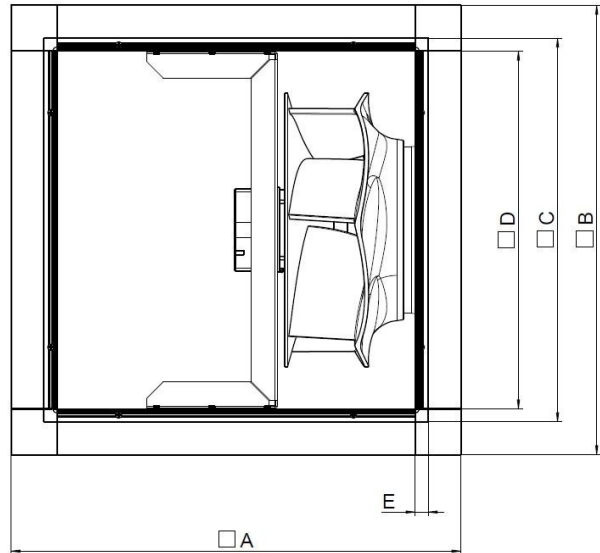
[Find more details in our online catalogue](#)

Technical parameters

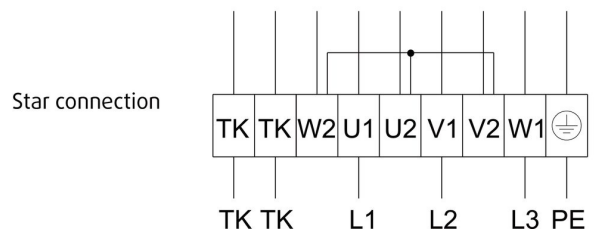
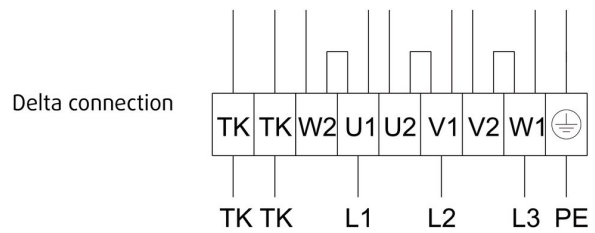
Nominal data	
Voltage (nominal)	400 V
Frequency	50 Hz
Phase(s)	3~
Input power	2,489 W
Input current	5 A
Impeller speed	1,332 r.p.m.
Air flow	max 13,817 m ³ /h
Temperature of transported air	max 45 °C
Max temperature of transported air, when speed controlled	45 °C
Protection/Classification	
Enclosure class, motor	IP54
Insulation class	F
Data according to ErP	
ErP ready	ErP 2016; ErP 2018
Dimensions and weights	
Weight	87 kg
Others	
Motor type	AC

Dimension

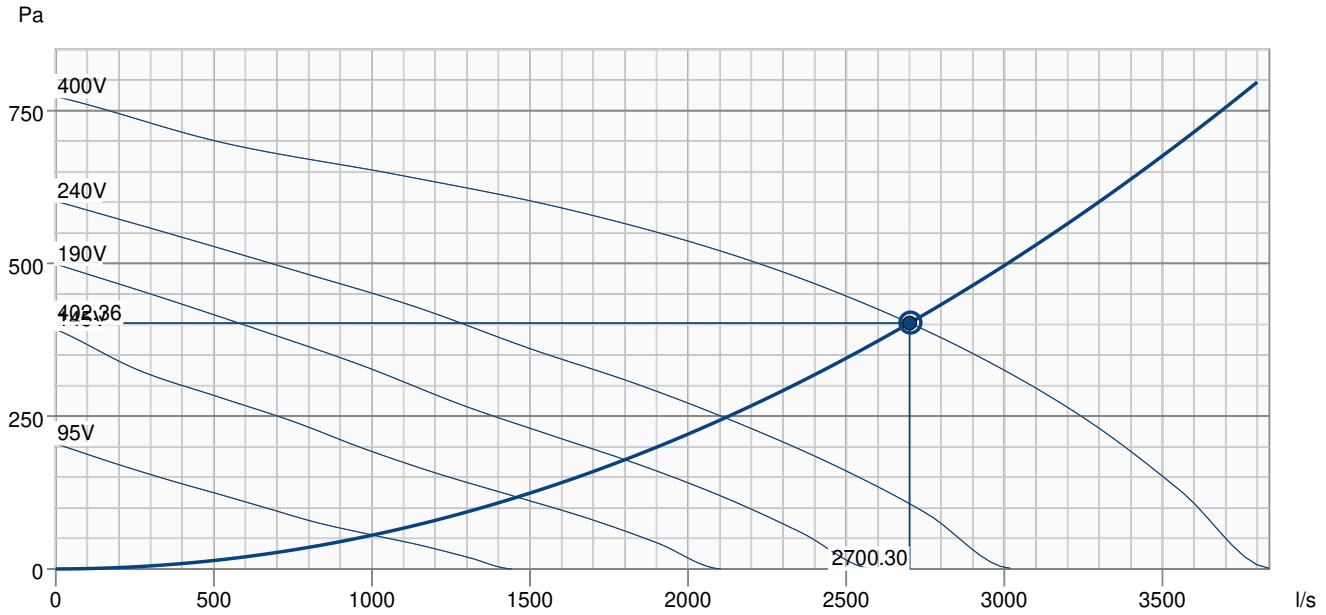
MUB 062	□A	□B	□C	□D	E
560/630	820	820	720	678	21



Wiring



Performance curve



Hydraulic data										
Required air flow	2702.89 l/s									
Required static pressure	403 Pa									
Working air flow	2700.30 l/s									
Working static pressure	402 Pa									
Air density	1.204 kg/m³									
Power	2448.1 W									
Fan control - RPM	1334 rpm									
Current	4.41 A									
SFP	0.907 kW/m³/s									
Control voltage	400.0 V									
Supply voltage	400 V									
Sound power level		63	125	250	500	1k	2k	4k	8k	Total
Inlet	dB(A)	56	69	72	76	78	76	71	63	83
Surrounding	dB(A)	36	53	44	44	48	47	38	28	56
Sound pressure level at 3m (20m² Sabine)	dB(A)	-	-	-	-	-	-	-	-	49
Sound pressure level at 3m free field	dB(A)	-	-	-	-	-	-	-	-	35

Accessories

FGV 062/716-716 flex. conn. (4198)
 REV-5POL/07-7.5kW R/Y (33980)
 RTRD 5.2 Speed control IP54 (32399)
 S-DT2SKT Two speed switch Y/D (2697)
 TUNE-AHU-DE008-062-718x718-M0 (79882)
 WSD 062 (860x860x70) complete (31482)
 FRQS-10A V2 (36232)
 CCM inlet MUB062 d630 (311783)
 CCM outlet MUB062 d630 (311681)
 CCM outlet 062 d630 KIT 30mm (239096)
 KKC-DX-L 062 cooling section (277262)
 KKC-W-L 062 cooling section (277270)
 KKF 30 062-filter-section (93312)
 KKS 062 silencer-section (276852)

FRQS-10A+LED V2 (36234)
 REV-9POL/12-7.5kW R/Y (33981)
 S-DT 16 Motor Protection (161206)
 SD-MUB Vibration pad set (37324)
 UGS 062/630 adapter flex. (4358)
 WSG 062 MUB complete (31486)
 CCM inlet MUB062 d560 (311782)
 CCM outlet MUB062 d560 (311684)
 CCM outlet 062 d560 KIT 30mm (239095)
 GRU 062 base frame h= 100mm (276662)
 KKC-DX-R 062 cooling section (277266)
 KKC-W-R 062 cooling section (277274)
 KKH-HW 062 heater-section (93340)
 SDM Service Door MUB 062 30mm (273935)

Documents

imo_mub_all_010_en_248056
 EU DECLARATION OF CONFORMITY_MUB_EN_[002].PDF
 COMMISSIONING REPORT_FANS_160628_EN_001.PDF